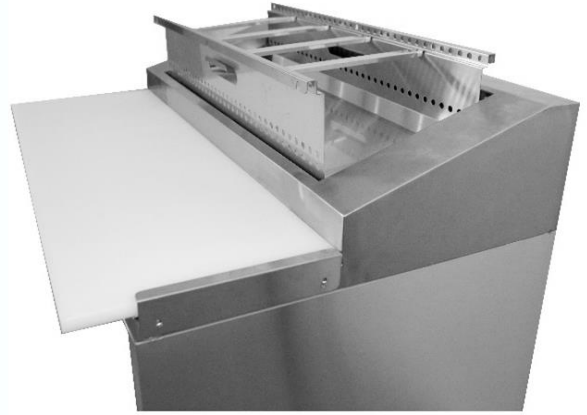




GLACIAN 760mm S/S DOOR PIZZA BARS



- 12 x 1/3 size pans (not supplied)
- Monoblock compressor system with removable condenser filter for easy cleaning
- Supplied on castors (feet optional)
- Nylon cutting board (increases overall depth to 830mm)
- Sliding polycarbonate pan covers
- Supplied with spacer bars for 1/6 and 1/9 size pans
- Removable well, for easy cleaning in places normally difficult to clean
- 304 grade stainless interior and exterior
- High density 75mm thick insulation
- Doors take 2 x 1/1 GN or 2/1 GN pan lengthways
- Corrosion resistant coating on evaporator coil
- Temperature range: -2°C to 4°C
- Rounded internal corners for easy cleaning
- 43°C Ambient temperature
- Self closing doors
- CFC-free refrigerant (R134a)
- Supplied with 1 shelf per door
- Fan delay switch on doors to save energy

MODEL	DESCRIPTION	EXTERNAL DIMENSIONS	INTERNAL DIMENSIONS	POWER SUPPLY	COMPRESSOR (HP)	PAN CAPACITY	CAPACITY (Litres)	WEIGHT (KG)
HPB1152	1 DOOR	1152 x 760 x 1050	587 x 658 x 558	240V/50HZ	1/4	5 x 1/3 GN	160L	135
HPB1815	2 DOOR	1814 x 760 x 1050	1249 x 658 x 558	240V/50HZ	1/4	9 x 1/3 GN	360L	170
HPB2476	3 DOOR	2476 x 760 x 1050	1911 x 658 x 558	240V/50HZ	3/8	12 x 1/3 GN	536L	220